

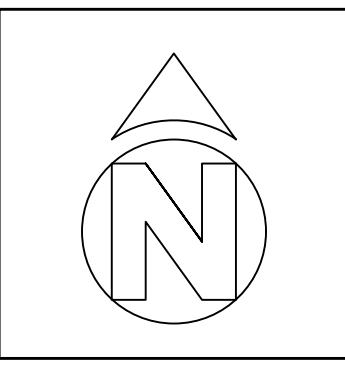
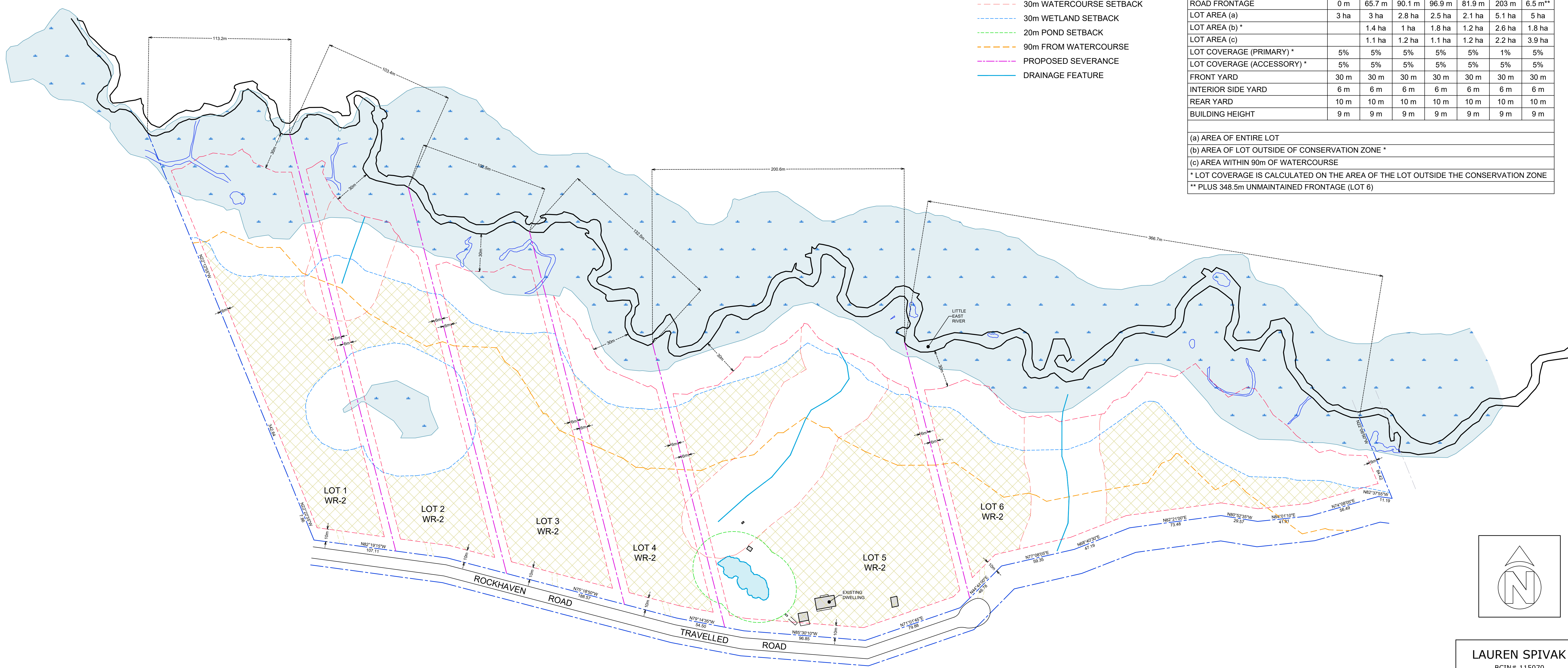
LEGEND:

- WETLAND
- POND
- POTENTIAL BUILDING ENVELOPE
- 30m WATERCOURSE SETBACK
- 30m WETLAND SETBACK
- 20m POND SETBACK
- 90m FROM WATERCOURSE
- PROPOSED SEVERANCE
- DRAINAGE FEATURE

LOT STATISTICS:

ZONING:	WR2 (WATERFRONT RESIDENTIAL 120m)						
PROVISION	REQ.	LOT 1	LOT 2	LOT 3	LOT 4	LOT 5	LOT 6
LOT FRONTAGE (MINIMUM)	120 m	113.2 m	103.4 m	102.5 m	132.5 m	200.6 m	366.7 m
ROAD FRONTAGE	0 m	65.7 m	90.1 m	96.9 m	81.9 m	203 m	6.5 m**
LOT AREA (a)	3 ha	3 ha	2.8 ha	2.5 ha	2.1 ha	5.1 ha	5 ha
LOT AREA (b) *		1.4 ha	1 ha	1.8 ha	1.2 ha	2.6 ha	1.8 ha
LOT AREA (c)		1.1 ha	1.2 ha	1.1 ha	1.2 ha	2.2 ha	3.9 ha
LOT COVERAGE (PRIMARY) *	5%	5%	5%	5%	5%	1%	5%
LOT COVERAGE (ACCESSORY) *	5%	5%	5%	5%	5%	5%	5%
FRONT YARD	30 m	30 m	30 m	30 m	30 m	30 m	30 m
INTERIOR SIDE YARD	6 m	6 m	6 m	6 m	6 m	6 m	6 m
REAR YARD	10 m	10 m	10 m	10 m	10 m	10 m	10 m
BUILDING HEIGHT	9 m	9 m	9 m	9 m	9 m	9 m	9 m

(a) AREA OF ENTIRE LOT
 (b) AREA OF LOT OUTSIDE OF CONSERVATION ZONE *
 (c) AREA WITHIN 90m OF WATERCOURSE
 * LOT COVERAGE IS CALCULATED ON THE AREA OF THE LOT OUTSIDE THE CONSERVATION ZONE
 ** PLUS 348.5m UNMAINTAINED FRONTAGE (LOT 6)



182 ROCKHAVEN ROAD
 PART OF LOT 19, CONCESSION 10, CHAFFEY
 PARTS 4 & 10 35R-7216
 TOWN OF HUNTSVILLE
 THE DISTRICT MUNICIPALITY OF MUSKOKA
 PINS 48076-0024 AND 48076-0025
 SITE PLAN TAKEN FROM SURVEY 35R-7216
 BY JOHN E. JACKSON O.L.S.
 AUGUST 18, 1980

LAUREN SPIVAK
 BCIN# 115070
 lauren@laurensipivak.com
 705-787-6648

THE DESIGNER HAS REVIEWED
 AND TAKES RESPONSIBILITY FOR
 THE DESIGN ACTIVITIES RELATING
 TO THESE DOCUMENTS

182 ROCKHAVEN RD
 HUNTSVILLE

REVISIONS:

1.	06/24/26	FOR CLIENT REVIEW

SCALE: 1:1500

SITE PLAN
SP-1