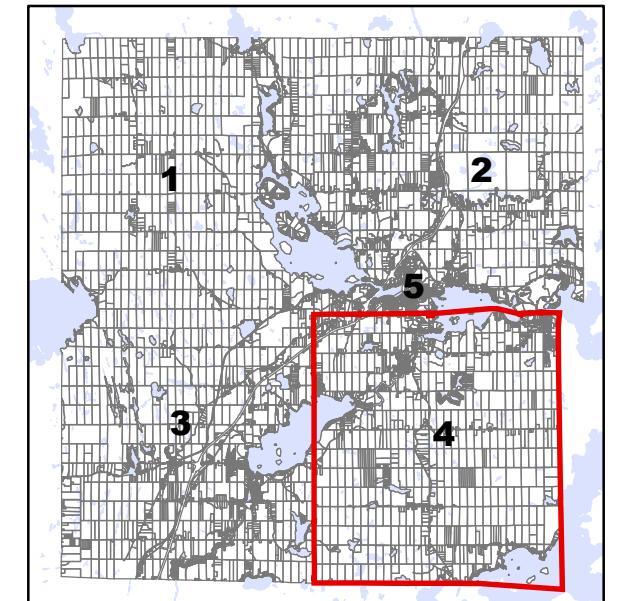
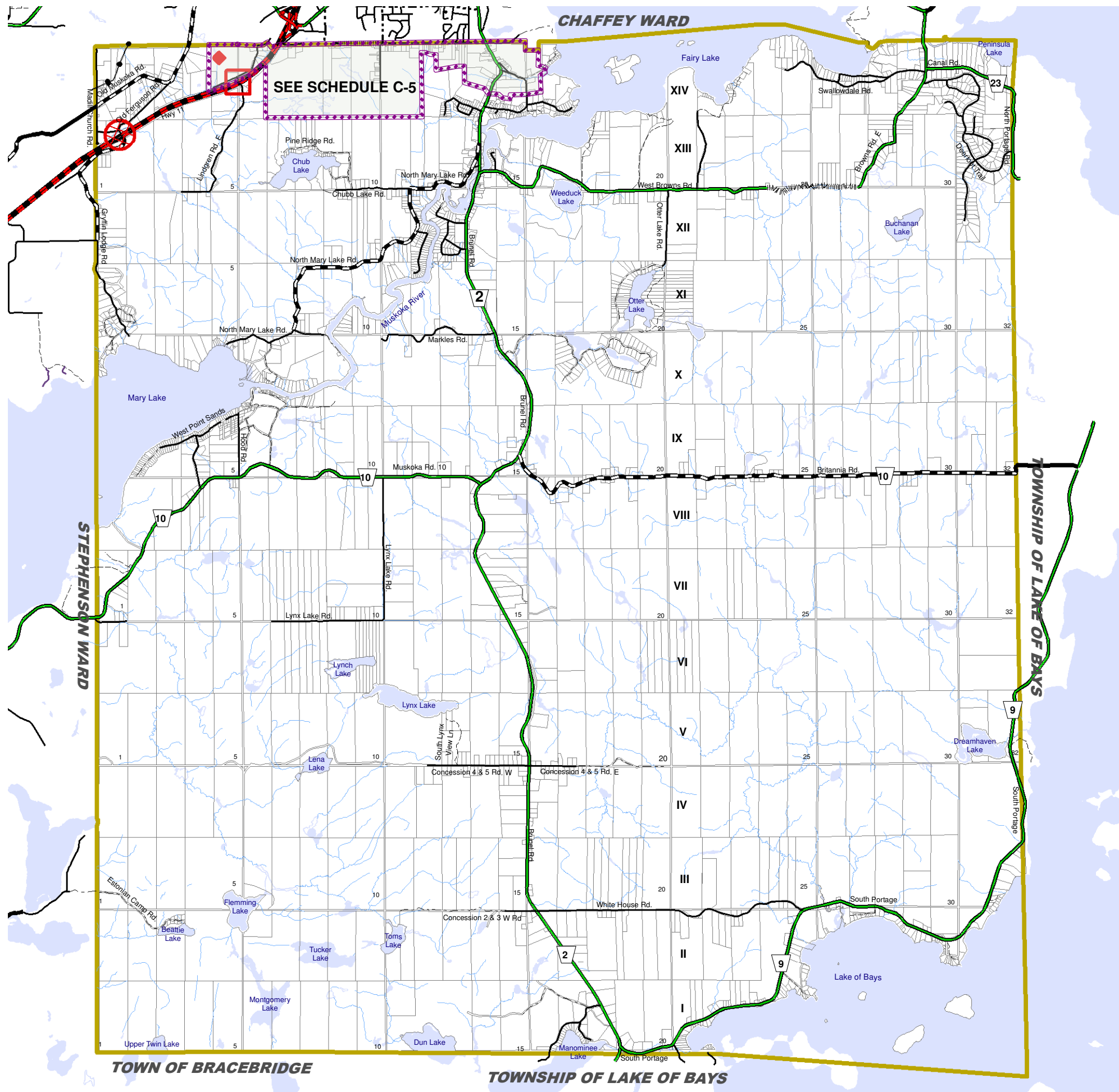


**SCHEDULE C-4
TOWN OF HUNTSVILLE OFFICIAL PLAN
Transportation
Geographic Township of Brunel**



KEY LOCATION MAP
September 11, 2006
Printed: July 7, 2009



- Former Township Boundary
- Tributary
- Huntsville Urban Settlement Area Boundary
- TransCanada Pipeline
- Railway

- Road Network**
- Highway 11
 - Arterial
 - Rural Collector
 - Urban Collector
 - Future Arterial
 - Future Collector
- Local Road (Municipal Maintained)**
- Year Round Maintained
 - Seasonally Maintained
 - Private
 - Unopened Road Allowance
 - Future Service

- Highway 11 Improvements**
- Existing Interchange
 - Future Interchange
 - Existing At Grade - To Be Closed
 - Flyover



NOTE:
For boundary interpretations, please contact the
Town of Huntsville, Planning & Development Department.
The map is a public resource of general information and is
not a plan of survey nor is it suitable for navigation.
This road network information has been generated or adapted from
Ontario Road Network Database. The Ontario Road Network Database
is the property of the Government of Ontario and is used under licence
from the Government of Ontario.

PLANScape
04May05 Rev: 06Sept11
File #76902
Projection: NAD 83;
Rotation: -22 degrees
(627,855.92, 4,999,938.95)

TOWN OF BRACEBRIDGE **TOWNSHIP OF LAKE OF BAYS**