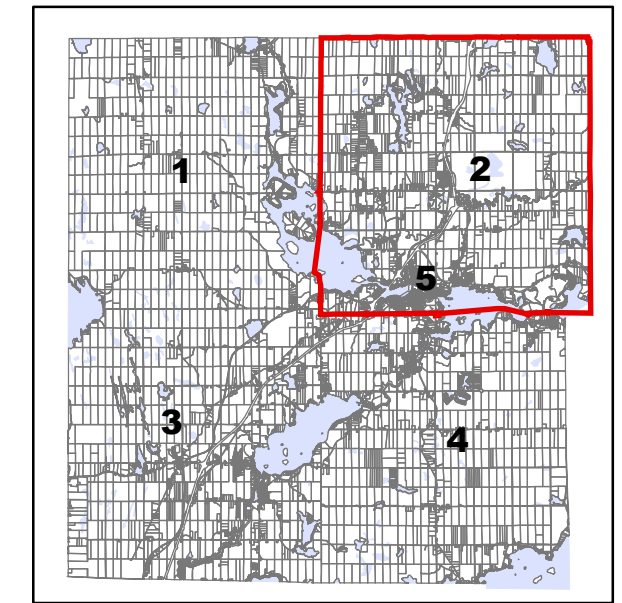
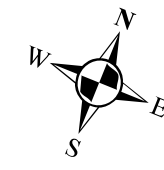
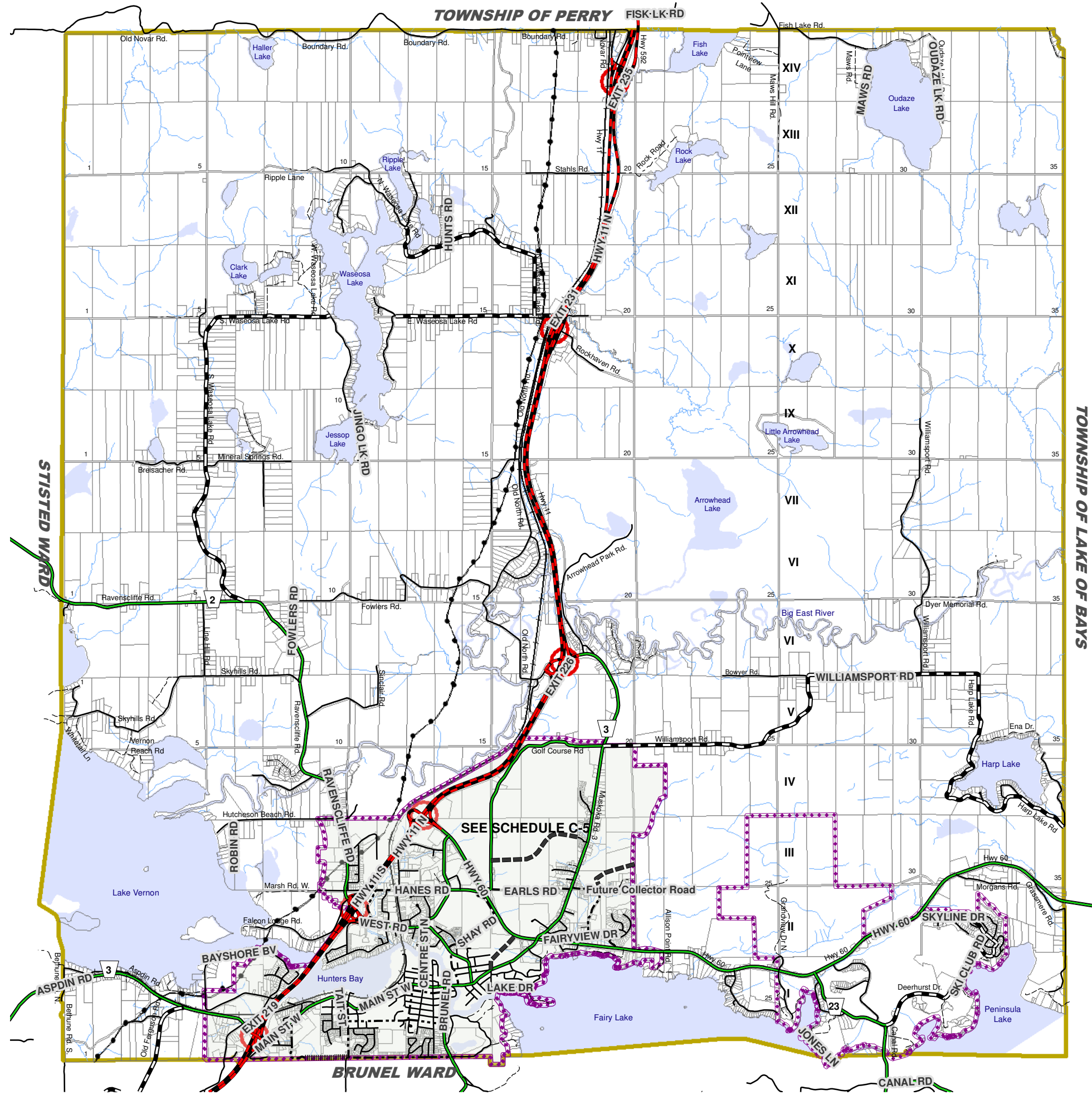


# SCHEDULE C-2 TOWN OF HUNTSVILLE OFFICIAL PLAN Transportation Geographic Township of Chaffey



**KEY LOCATION MAP**  
September 11, 2006  
Revised: December 2012



- Former Township Boundary
- Tributary
- Huntsville Urban Settlement Area Boundary
- TransCanada Pipeline
- Railway

- Road Network**
- Highway 11
  - Arterial
  - Rural Collector
  - Urban Collector
  - Future Arterial
  - Future Collector
- Local Road (Municipal Maintained)**
- Year Round Maintained
  - Seasonally Maintained
  - Private
  - Unopened Road Allowance
  - Future Service

- Highway 11 Improvements**
- Existing Interchange
  - Future Interchange
  - Existing At Grade - To Be Closed
  - Flyover



NOTE:  
For boundary interpretations, please contact the  
Town of Huntsville, Planning & Development Department.  
The map is a public resource of general information and is  
not a plan of survey nor is it suitable for navigation.  
This road network information has been generated or adapted from  
Ontario Road Network Database. The Ontario Road Network Database  
is the property of the Government of Ontario and is used under licence  
from the Government of Ontario.

**PLANScape**  
04May05 Rev: 06Sept11  
File #76902  
Projection: NAD 83;  
Rotation: -22 degrees  
(627,855.92, 4,999,938.95)